

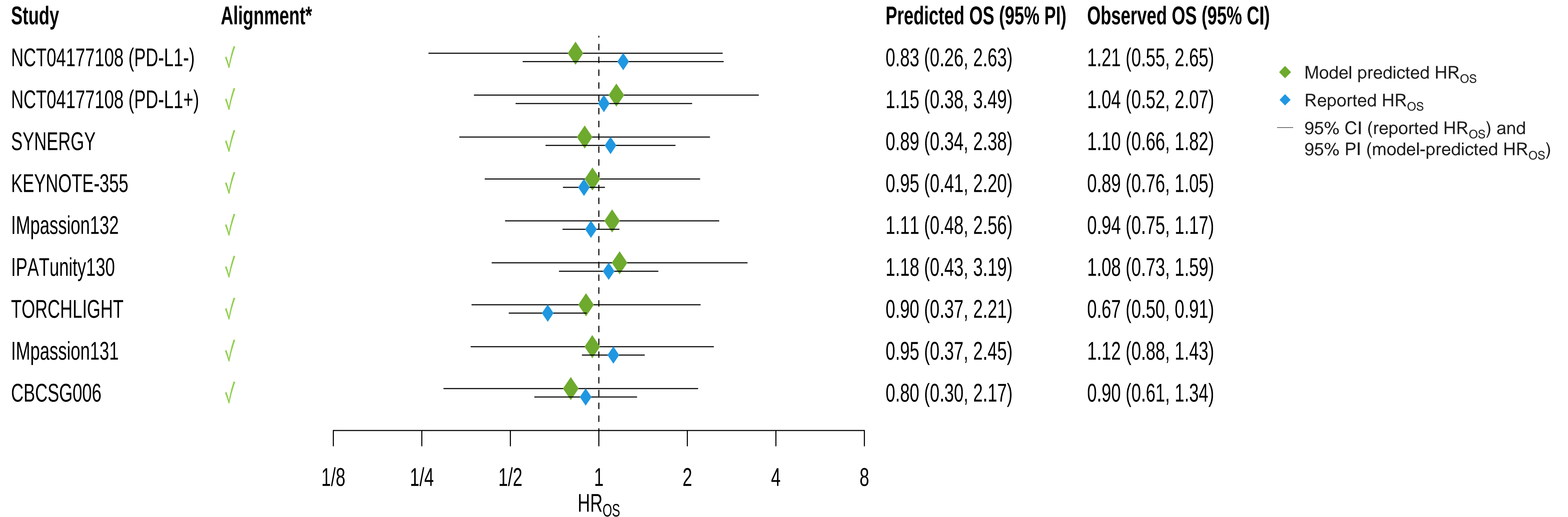
Kevin Punie¹, Sara Hurvitz², Anandaroop Dasgupta³, Ankita Kaushik³, Catherine Lai³, Sunita Padman³, Nikoleta Sjekloca³, Billy Amzal⁴, Paul Serafini⁵, Gaurang Nazar⁵

¹Department of Medical Oncology, Oncology Center Antwerp, Ziekenhuis Aan de Stroom, Antwerp, Belgium; ²Department of Medicine, UW Medicine, Clinical Research Division, Fred Hutchinson Cancer Center, Seattle, WA, USA; ³Gilead Sciences, Inc., Foster City, CA, USA; ⁴Phastar, Paris, France; ⁵Evidinno Outcomes Research Inc., Vancouver, Canada

Table of Contents

Supplementary Figure	Slide
LOOCV for the Sensitivity Analysis Excluding Crossovers Trials	2
Prediction Line and STE for the Sensitivity Analysis Excluding Crossovers Trials	3
LOOCV for the Sensitivity Analysis Excluding Paired Single-Arm Studies	4
Prediction Line and STE for the Sensitivity Analysis Excluding Paired Single-Arm Studies	5
LOOCV for the Sensitivity Analysis Excluding Studies Violating the PH Assumption	6
Prediction Line and STE for the Sensitivity Analysis Excluding Studies Violating the PH Assumption	7
LOOCV for the Sensitivity Analysis Including RCTs Only	8
Prediction Line and STE for the Sensitivity Analysis Including RCTs Only	9

LOOCV for the Sensitivity Analysis Excluding Crossovers Trials

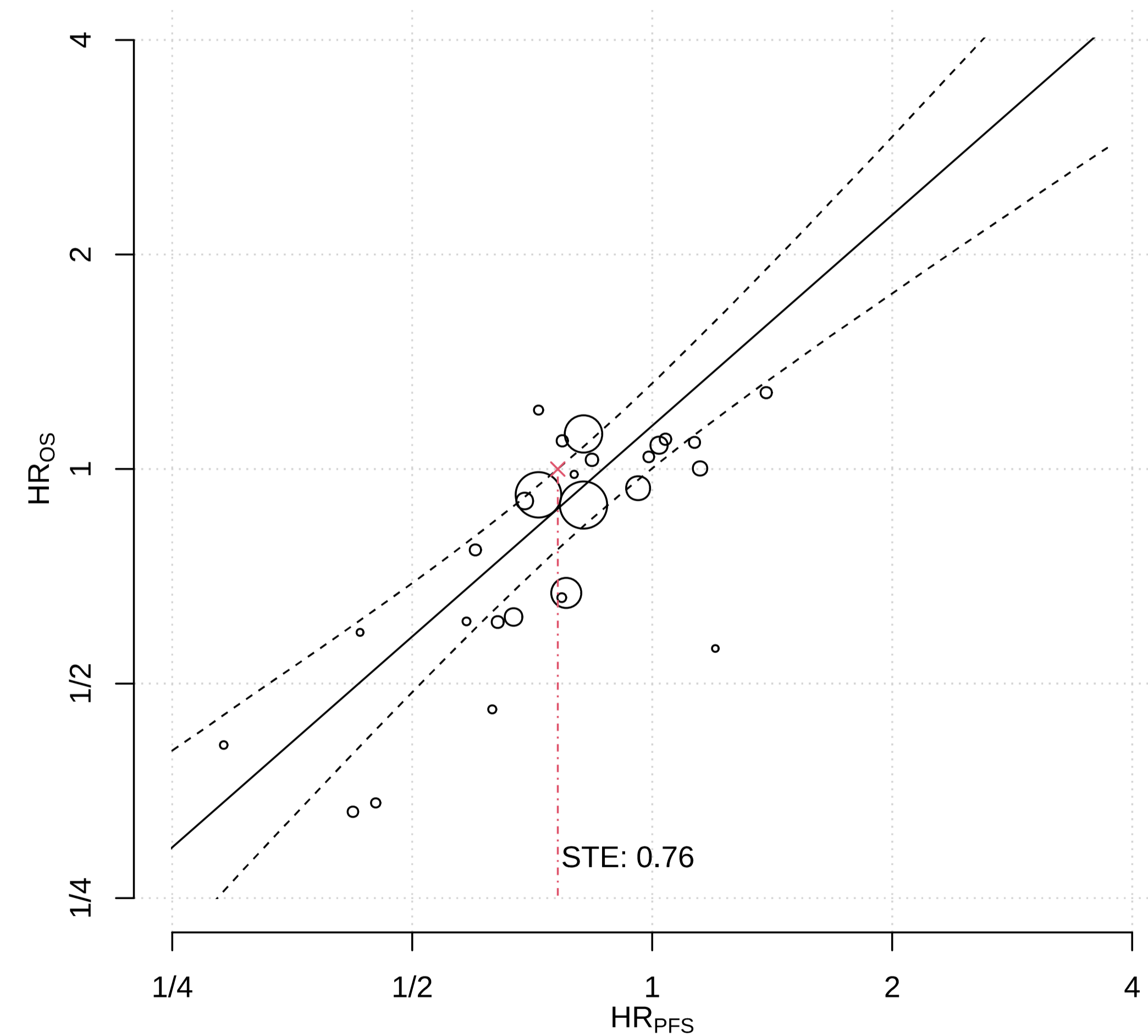


The axis is in log scale.

*A green checkmark indicates that the 95% prediction interval around the green diamond captured the blue diamond.

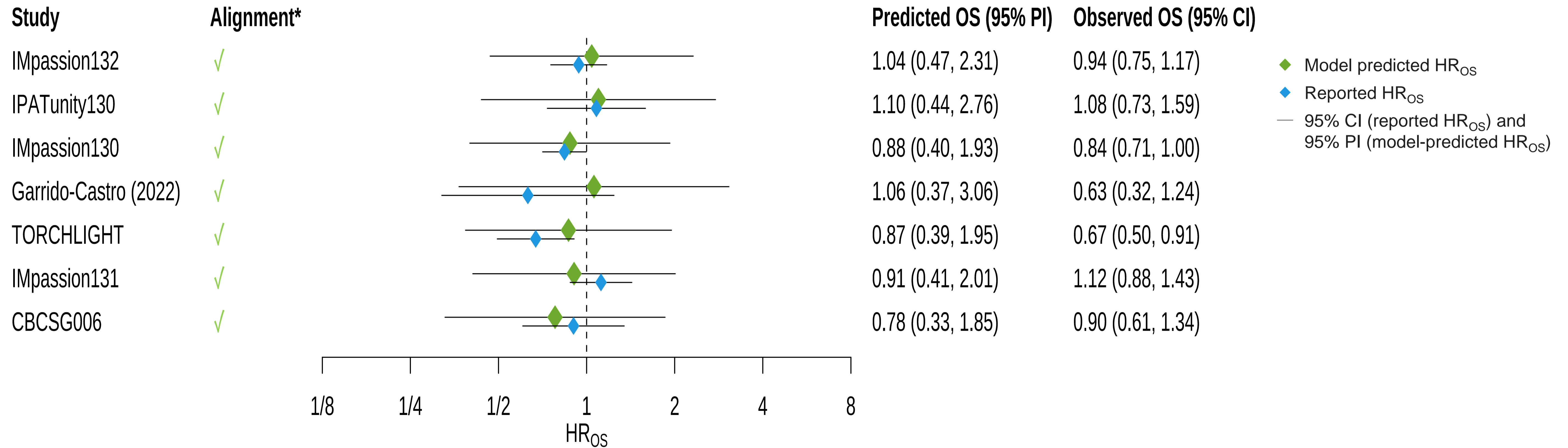
CI, confidence interval; HR, hazard ratio; LOOCV, leave-one-out cross-validation; PD-L1, programmed cell death-ligand 1; PI, predicted interval; OS, overall survival.

Prediction Line and STE for the Sensitivity Analysis Excluding Crossovers Trials



The axis are in log scale. Each circle represents the HR_{OS} and HR_{PFS} from a single comparison (scaled by sample size). The solid black line represents the predicted HR_{OS} for each value of HR_{PFS} and the dashed lines represent the 95% credible band around the prediction line. The red cross is the STE, the smallest HR_{PFS} for which the predicted HR_{OS} is statistically significant.
HR, hazard ratio; OS, overall survival; PFS, progression-free survival; STE, surrogate threshold effect.

LOOCV for the Sensitivity Analysis Excluding Paired Single-Arm Studies

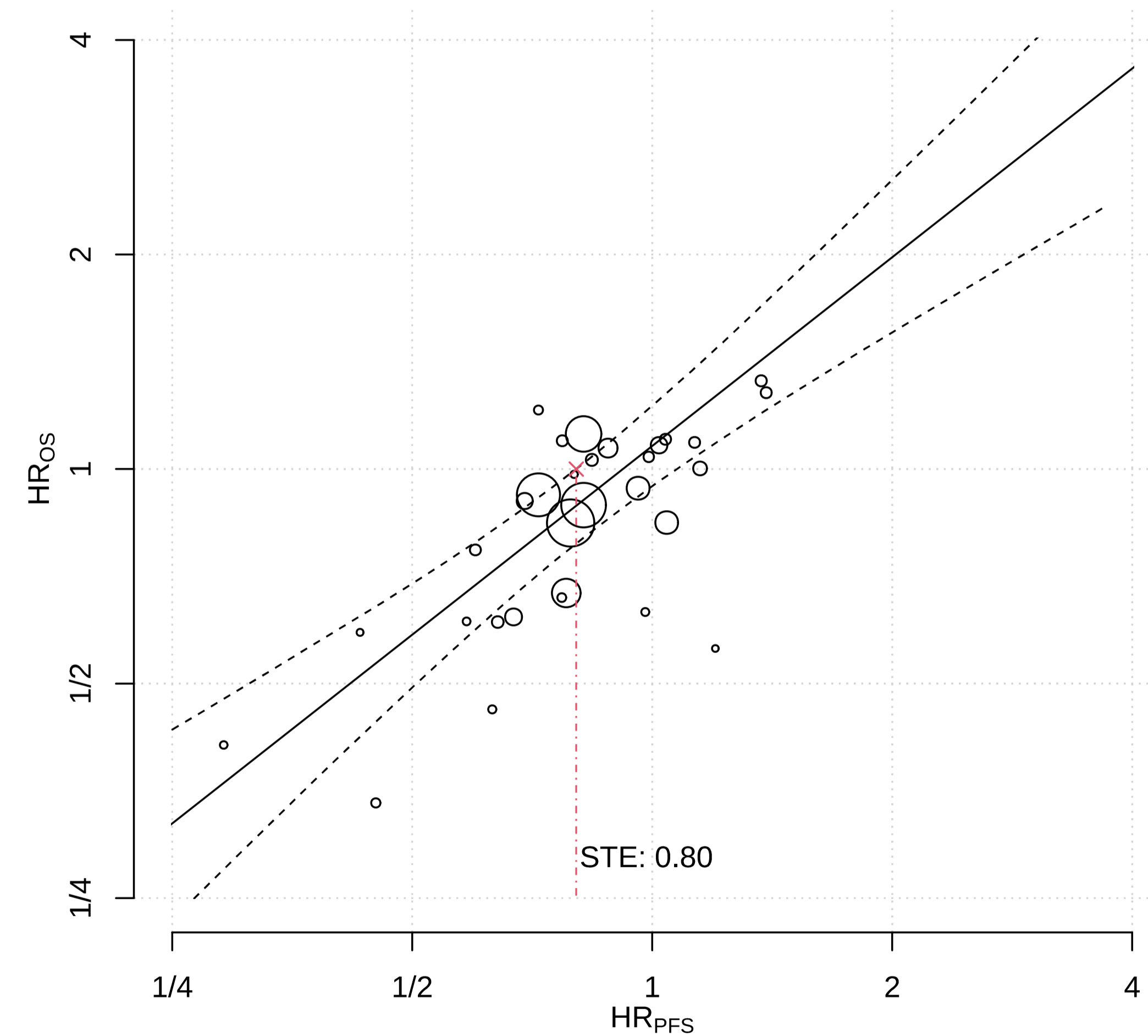


The axis is in log scale.

*A green checkmark indicates that the 95% prediction interval around the green diamond captured the blue diamond.

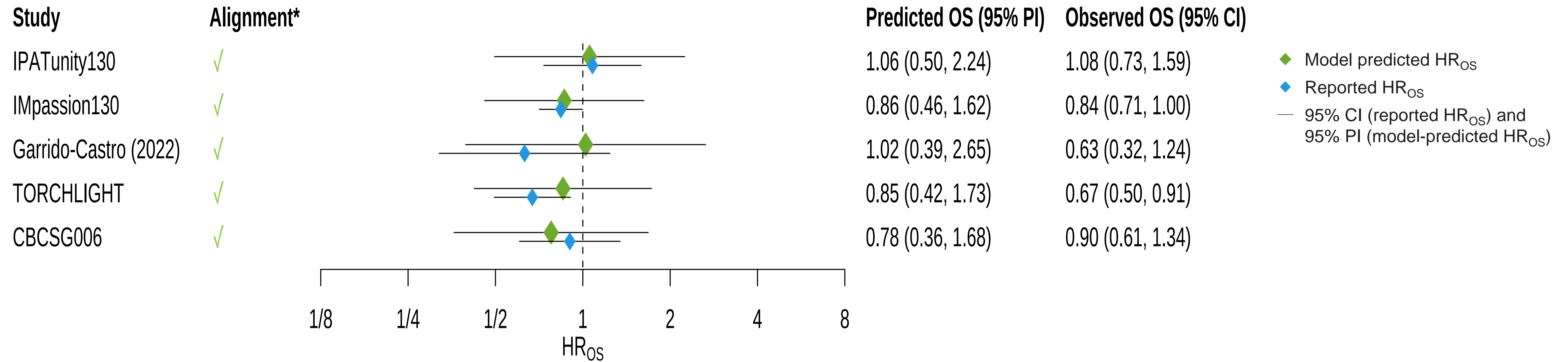
CI, confidence interval; HR, hazard ratio; LOOCV, leave-one-out cross-validation; PI, predicted interval; OS, overall survival.

Prediction Line and STE for the Sensitivity Analysis Excluding Paired Single-Arm Studies



The axis are in log scale. Each circle represents the HR_{OS} and HR_{PFS} from a single comparison (scaled by sample size). The solid black line represents the predicted HR_{OS} for each value of HR_{PFS} and the dashed lines represent the 95% credible band around the prediction line. The red cross is the STE, the smallest HR_{PFS} for which the predicted HR_{OS} is statistically significant. HR, hazard ratio; OS, overall survival; PFS, progression-free survival; STE, surrogate threshold effect.

LOOCV for the Sensitivity Analysis Excluding Studies Violating the PH Assumption

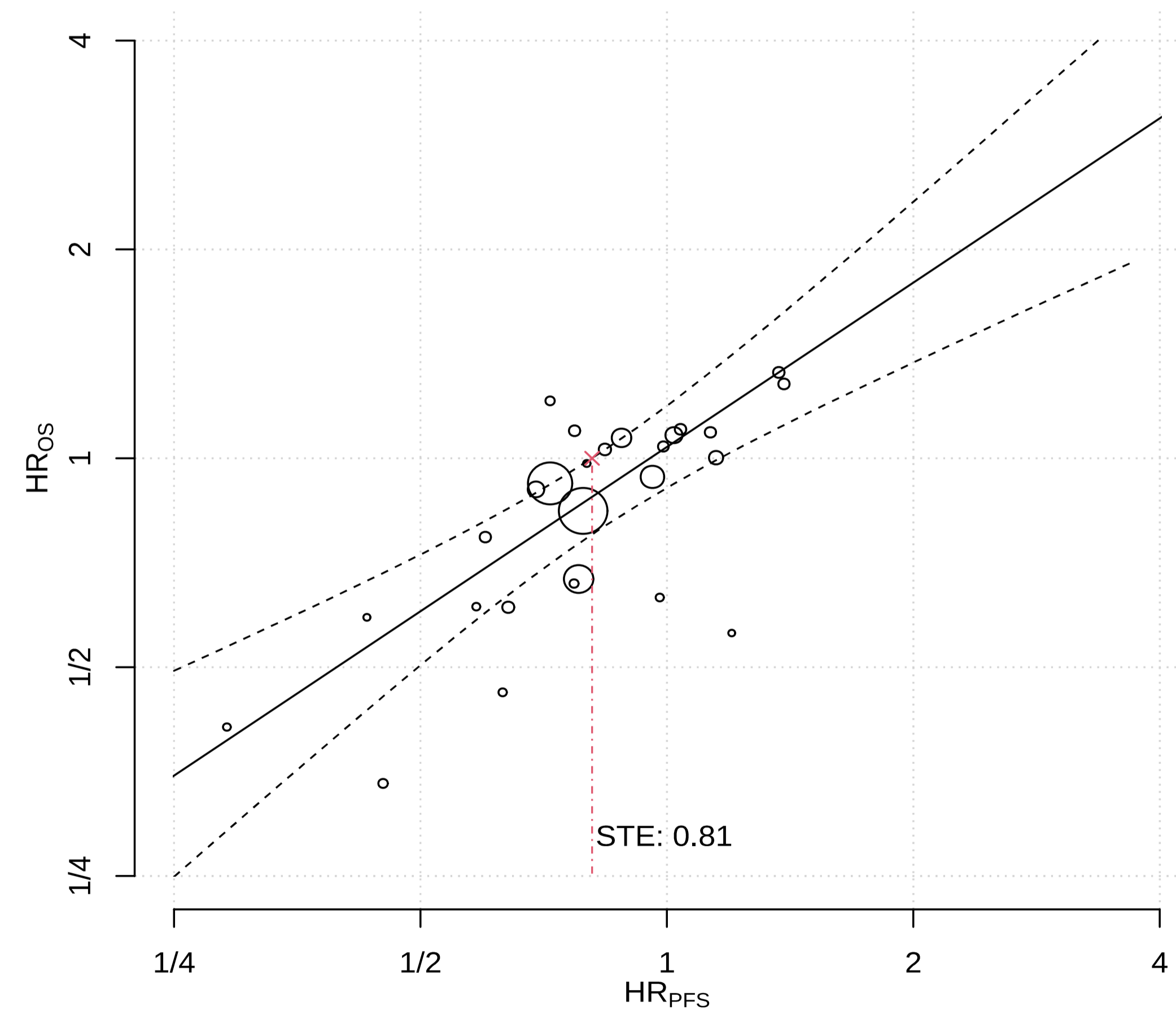


The axis is in log scale.

*A green checkmark indicates that the 95% prediction interval around the green diamond captured the blue diamond.

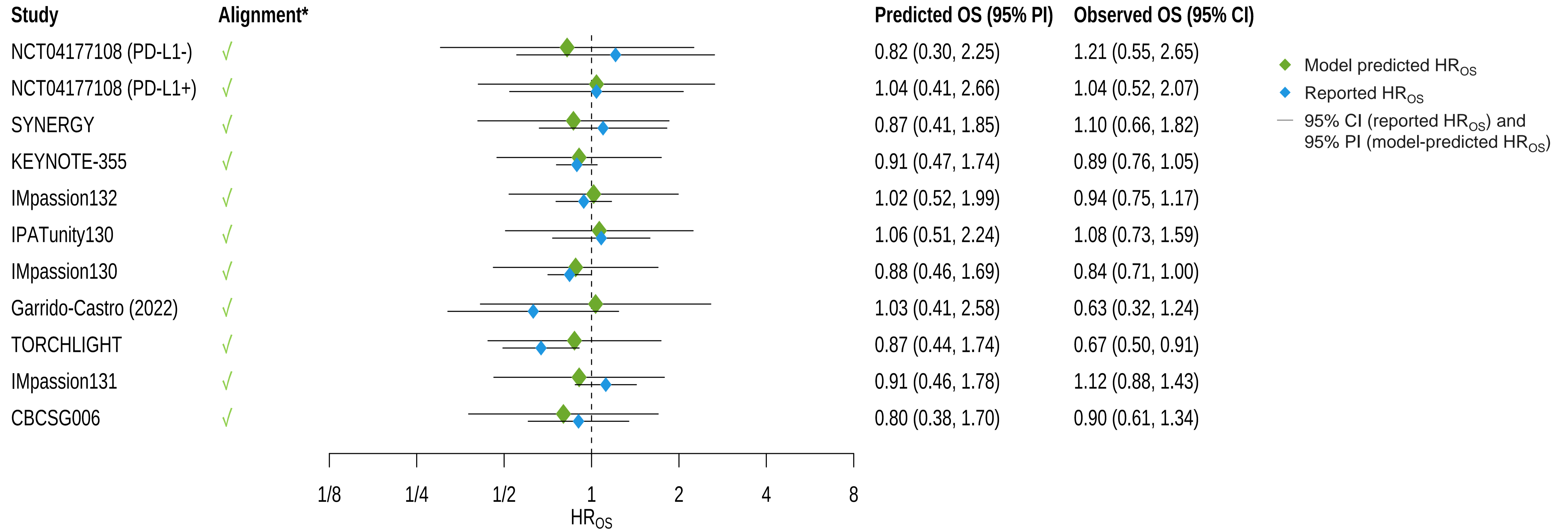
CI, confidence interval; HR, hazard ratio; LOOCV, leave-one-out cross-validation; PI, predicted interval; OS, overall survival.

Prediction Line and STE for the Sensitivity Analysis Excluding Studies Violating the PH Assumption



The axes are in log scale. Each circle represents the HR_{OS} and HR_{PFS} from a single comparison (scaled by sample size). The solid black line represents the predicted HR_{OS} for each value of HR_{PFS} and the dashed lines represent the 95% credible band around the prediction line. The red cross is the STE, the smallest HR_{PFS} for which the predicted HR_{OS} is statistically significant. HR, hazard ratio; OS, overall survival; PFS, progression-free survival; PH, proportional hazard; STE, surrogate threshold effect.

LOOCV for the Sensitivity Analysis Including RCTs Only

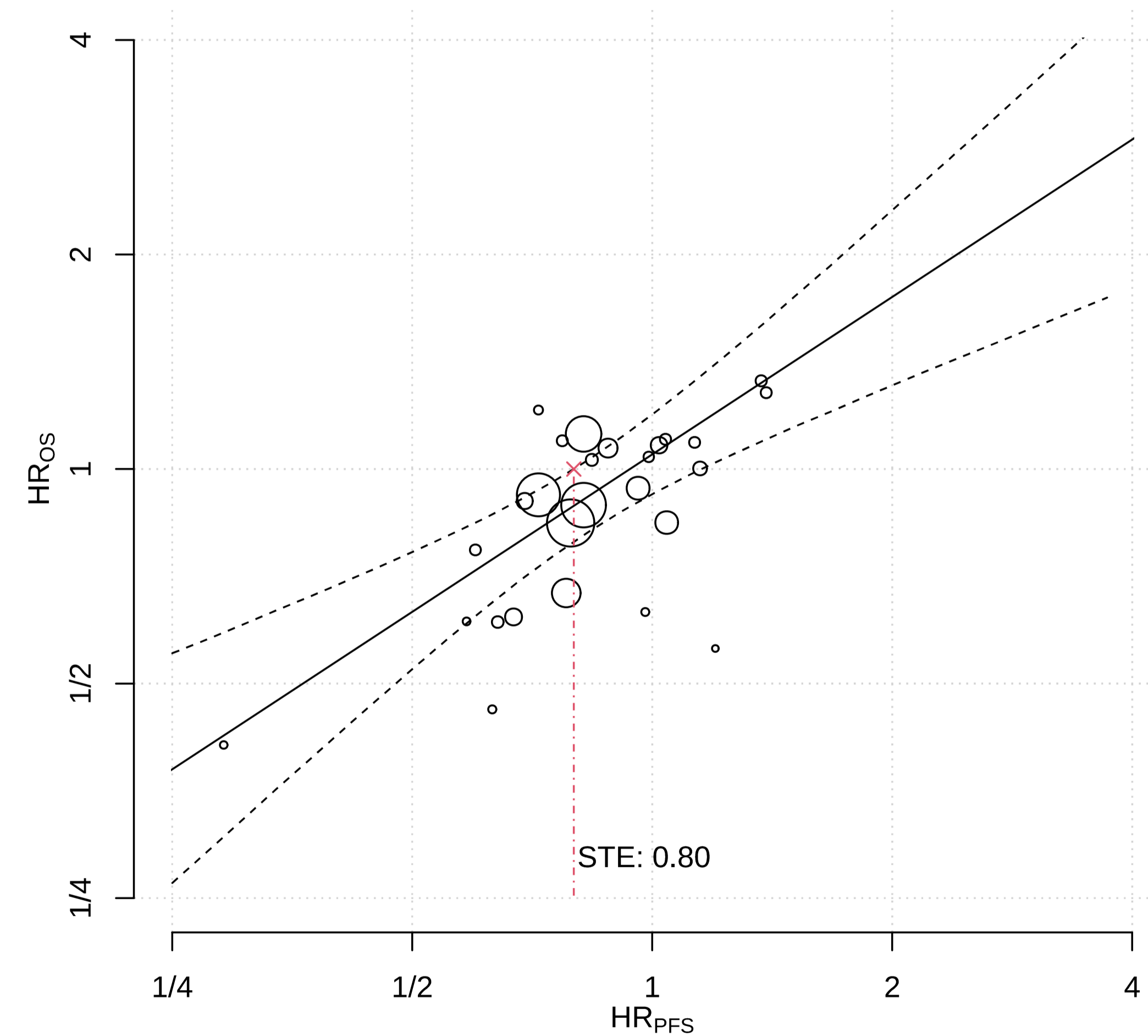


The axis is in log scale.

*A green checkmark indicates that the 95% prediction interval around the green diamond captured the blue diamond.

CI, confidence interval; HR, hazard ratio; LOOCV, leave-one-out cross-validation; PD-L1, programmed cell death-ligand 1; PI, predicted interval; OS, overall survival.

Prediction Line and STE for the Sensitivity Analysis Including RCTs Only



The axis are in log scale. Each circle represents the HR_{OS} and HR_{PFS} from a single comparison (scaled by sample size). The solid black line represents the predicted HR_{OS} for each value of HR_{PFS} and the dashed lines represent the 95% credible band around the prediction line. The red cross is the STE, the smallest HR_{PFS} for which the predicted HR_{OS} is statistically significant.
HR, hazard ratio; OS, overall survival; PFS, progression-free survival; RCT, randomized clinical trial; STE, surrogate threshold effect.